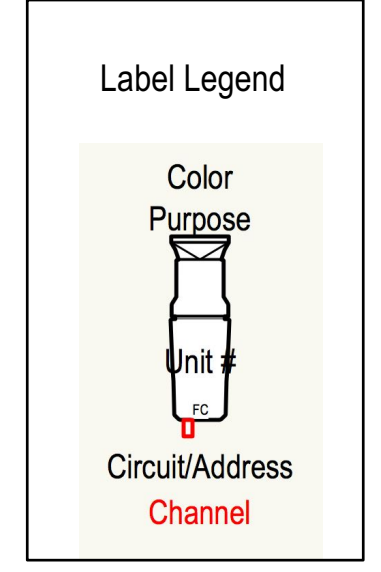
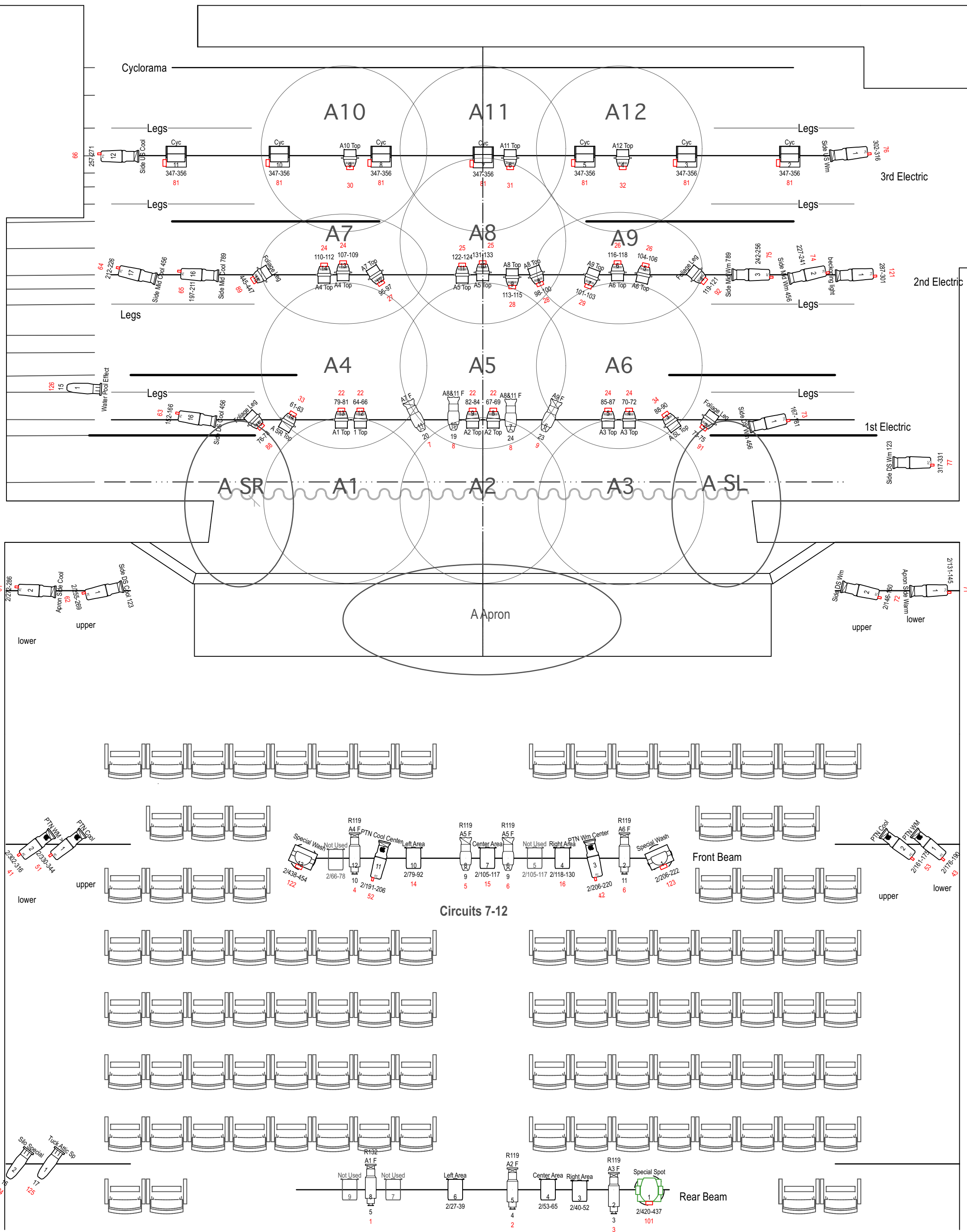


- 19 - 1 speed - **Cyc**
- 18 - variable-speed **Open**
- 17 - variable-speed - **Legs + Teaser**
- 16 - 1 speed - **3rd Electric**
- 15 - 1 speed **Open**
- 14 - variable-speed - storage
- 13 - variable-speed - **Legs**
- 12 - 1 speed - **Crossover Curtain**
- 11 - variable-speed **Open**
- 10 - 1 speed - **2nd Electric**
- 9 - (DISABLED 3/22) variable-speed **Open**
- 8 - variable-speed - **Legs**
- 7 - variable-speed **Open**
- 6 - variable-speed **Open**
- 5 - 1 speed - **Teaser**
- 4 - variable-speed - **Legs**
- 3 - 1 speed - **1st Electric**
- 2 - variable-speed **Open**
- 1 - variable-speed - **Act Curtain**



Light			
	Altman Shakespeare 20deg @ 575w	5 / 5	
	Chauvet Ovation C-805FC 175w	7 / 12	
	Chauvet Ovation E-910 FC 26 Degree @ 240w	13 / 12	
	Chauvet Ovation E-910 FC 36 Degree @ 240w	7 / 8	
	Elation Fuze Par Z175 @ 200w	10 / 10	
	ETC Source4 Jr 26deg @ 575w	4 / 6	
	ETC Source4 Jr 36deg @ 575w	2 / 2	
	Chauvet Ovation EVEP-130 RGB Zoom @ 151w	25 / 25	
	Strand SL19 @ 575w	3 / 0	
Moving Light			
	Chauvet Rogue R2 Spot @ 310w	1 / 1	
	Chauvet Rogue R2 Wash @ 339w	2 / 2	
Typical			
Color Summary			
	<u>Color</u>	<u>Size</u>	<u>Count</u>
	R119	6.25"	6
	R132	6.25"	1

Production: **Tuck Everlasting**
 Facility: **AHA Theater**
 Drawing Name: **Light Plot**
 Date: **3/31/22** Scale: **1/4" = 1'-0"** Drawing #: **1**
 Revision: **4/4/22**
 Drawn By: **Brian Bjorklund**